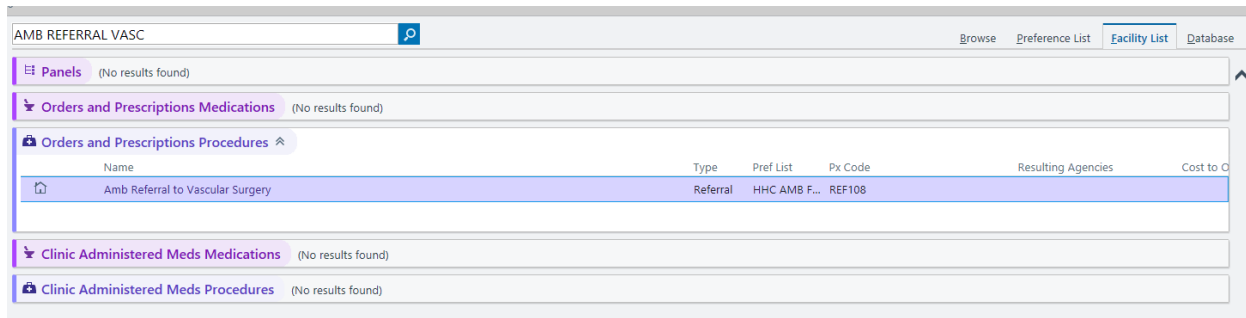
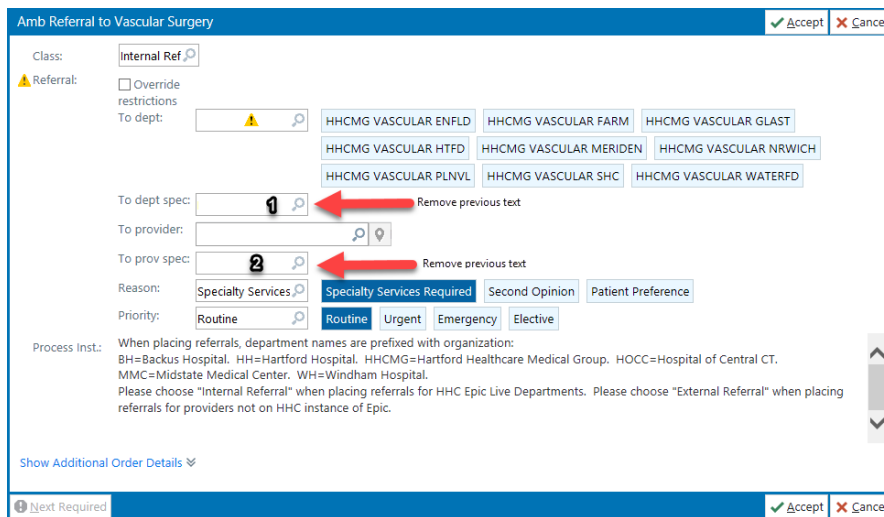


Place the order (i.e. Amb Referral to Vascular Surgery) – it will appear on the Facility List tab.

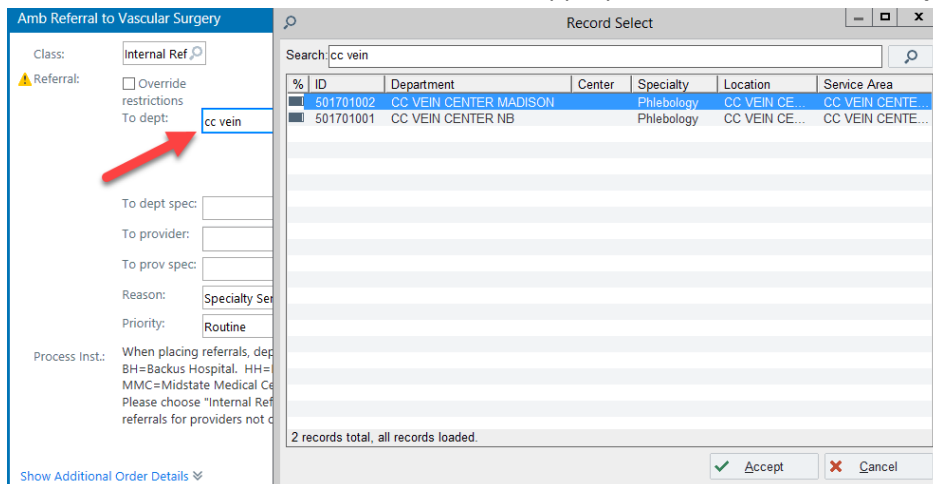


Option #1:

1. In the “To dept spec”, remove the current item.
2. In the “To prov spec”, remove the current item.



3. In the “To dept”, type “vein” and hit Enter. The Record Select window will appear showing CC Vein Center Madison and CC Vein Center NB. Select the appropriate office and click Accept.



NOTE: At this point, the provider can sign the order. They do **NOT** need to select a provider in your office if they do not wish to. If they do want to specify a particular provider, complete steps #4 & 5.

- Click the magnifying glass next to the **"To provider"** textbox. All providers in your office will appear in the list with no additional searching.


Amb Referral to Vascular Surgery ✔ Accept ✖ Cancel

Class:

Referral: Override restrictions

To dept:

To dept spec:

To provider: 

To prov spec:

Reason:

Priority:

Process Inst.: When placing referrals, department names are prefixed with organization:
 BH=Backus Hospital. HH=Hartford Hospital. HHC MG=Hartford Healthcare Medical Group. HOCC=Hospital of Central CT.
 MMC=Midstate Medical Center. WH=Windham Hospital.
 Please choose "Internal Referral" when placing referrals for HHC Epic Live Departments. Please choose "External Referral" when placing referrals for providers not on HHC instance of Epic.

[Show Additional Order Details](#)

Next Required ✔ Accept ✖ Cancel

Showing results. Filtered by: **Department Specialty** Most relevant matches on top

ICP (Preferred)

	Alfred G Gladstone, MD Radiology, Diagnostic	23 Cedar Street New Britain CT 06052
	Wanda M Kirejczyk, MD Radiology, Diagnostic	23 Cedar Street New Britain CT 06052
Out Of Network		
	Magdalena Lukaszewicz, PA Surgery, Vascular	23 Cedar St New Britain CT 06052
	Katelyn Rivers, PA General Medicine	23 Cedar Street New Britain CT 06052
	Ashley Stevens, APRN Surgery, Vascular	23 Cedar Street New Britain CT 06052

- Select the appropriate provider. Click **Accept** on the order window and sign the order as normal.